

Prayas

Pursuing Excellence in Governance

Edited by **MOHAN DAS VISWAM**

Prayas provides powerful visualizations, robust analytics and actionable insights to enable Government to align well with key policy makers and program executioners. This platform with consolidated view of 100+ schemes and 600+ KPIs paves the path for better Governance. The platform today visualizes the progress status of more than 100 schemes including PM Ayushman Bharat-Jan Arogya Yojana, Atal Pension Yojana, Jal Jeevan Mission, MGNREGA, PM Gram Sadak Yojana, PM Fasal Bima Yojana, PM Awas Yojana, PM Jan Dhan Yojana, Swachh Bharat Mission etc. through 600+ KPIs and 1800+ Visualizations.



P. K. Mittal
Managing Director- NICSI
(Scientist-G)
pk.mittal@nic.in



Anjali Dhingra
General Manager- NICSI
(Scientist-F)
anjali.d@nic.in



Ashutosh P. Maurya
Dy. General Manager
(Scientist-E)
ap.maurya@nic.in

Government has launched numerous citizen centric initiatives/ schemes across the country for the benefit of the people. Hence, to ensure adequate Governance on scheme implementation progress and reach, the need was felt by Government to monitor their progress comprehensively. Thus, **Prayas Platform** was built to fulfill these requirements.

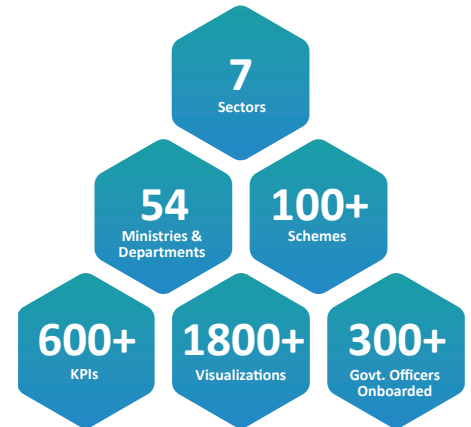
Prayas has so far enabled to visualize the progress status of more than **100** schemes including PM Ayushman Bharat - Jan Arogya Yojana, Atal Pension Yojana, Jal Jeevan Mission, MGNREGA, PM Gram Sadak Yojana, PM Fasal Bima Yojana, PM Awas Yojana, PM Jan Dhan Yojana, Swachh Bharat Mission etc. through **600+** KPIs and **1800+** Visualizations in the form of graphs, maps, charts, time series etc. These schemes are being implemented by **54** Ministries and Departments across **7** Sectors namely Agriculture and Rural, Finance and Economy, Foreign and Security, Human Resources, Infrastructure and Resources, Social and Welfare, Technology and Governance.

Through this initiative, Apex Offices like PMO can connect with concerned Ministries and Departments in a better manner and jointly identify areas for further improvement thereby promoting culture of collaboration and accountability within the Government, and making Government more productive, effective and efficient.

The core features of the platform include real time performance management with identification of leaders and laggards States/ UTs and comparative dashboard to undertake inter-relation studies to ascertain correlations between multiple schemes for example increase in skilled resources in a state should lead to drop in enrollments of unskilled workers under MGNREGA (Mahatma Gandhi National Rural Employment Guarantee Act).

Objectives

- To provide a holistic view of flagship programs and schemes for monitoring implementation and reach through critical KPIs
- To analyze schemes/ programs and generate insights for faster decision making
- To compare progress and facilitate study of inter-relations among schemes
- To build a secure platform with authentic, consistent and regularly updated data
- To create awareness among concerned authorities about the progress of their schemes with respect to other regions

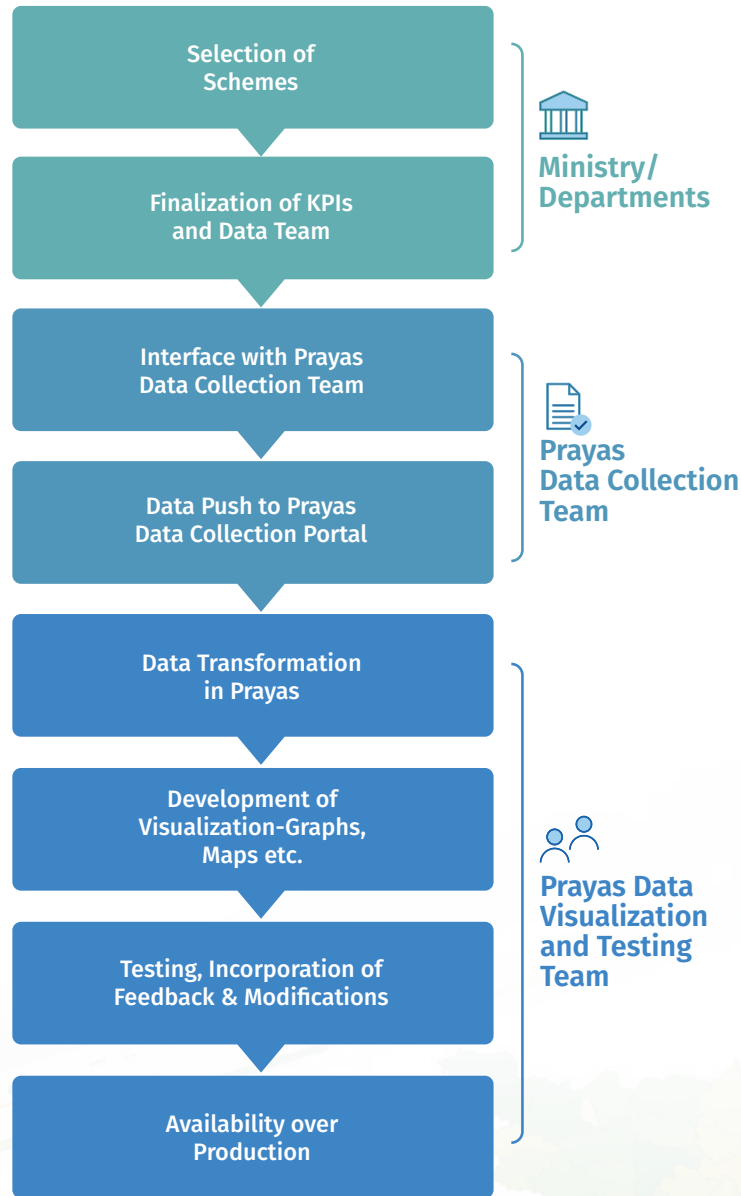


▲ Platform Stats

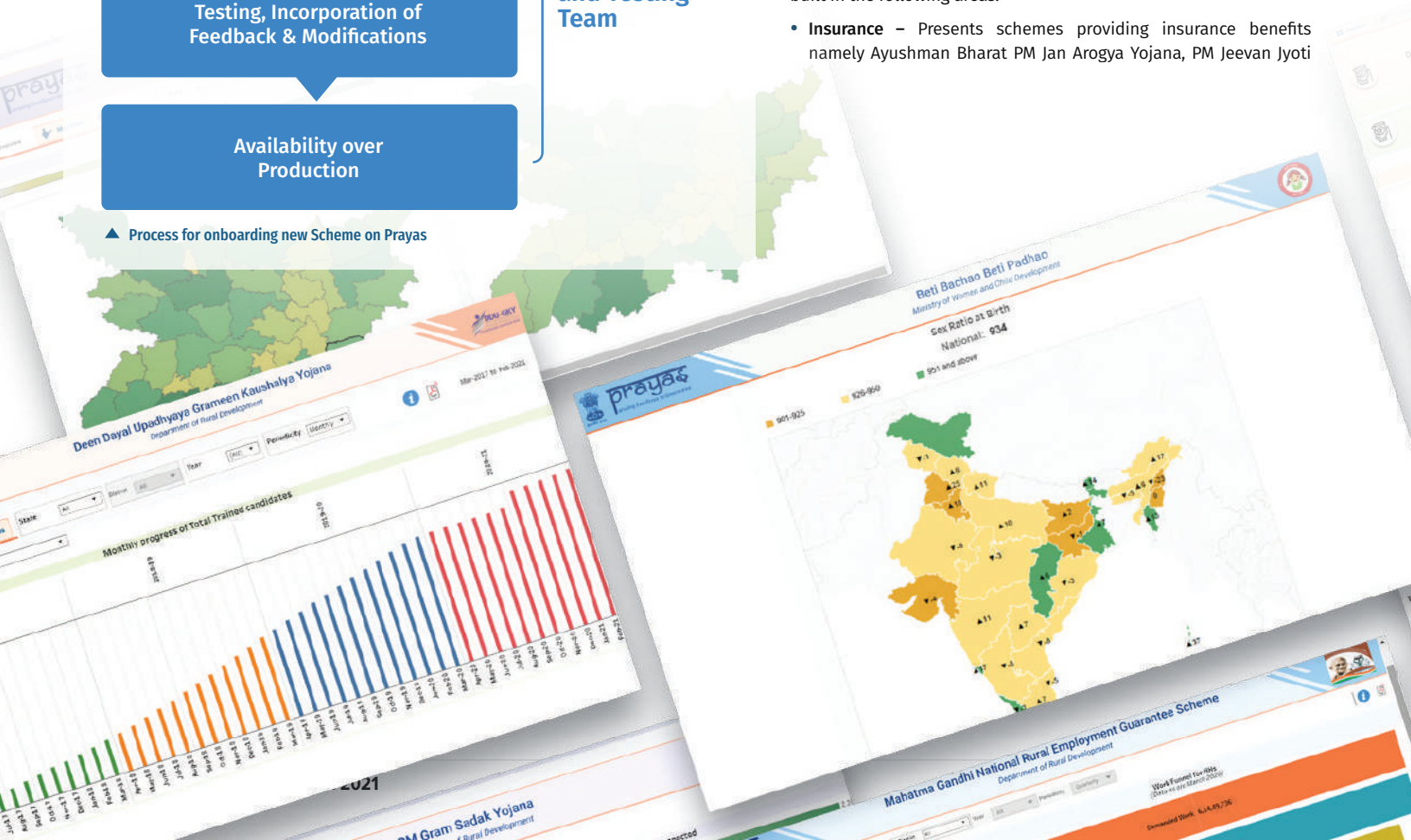
Salient Features

- Transfer of data from source MIS to **Prayas** through APIs to ensure Data authenticity and maintain single source of truth across stakeholders
- Facility to electronically consume data (API based) on daily basis or as per data periodicity for minimal or no data mismatch between source system and Prayas platform
- Data-due Alerts, to ensure that data is timely pushed to the platform
- Data Quality system comprising of in-built intelligence to assess data anomalies such as unusual spikes, dips, null values, etc. and sends auto-alerts to nodal officers for verification
- Provides easy inclusion & deletion of new schemes, features and functionalities, thus ensuring incremental development with ease
- Enables quick analysis by exhibiting critical KPIs of schemes on the home page along with growth status
- Facilitates easy and quick navigation through multiple layers up to available data granularity
- Secured platform through role-based access and login only through existing Government Email IDs with LDAP authentication

Prayas
Pursuing Excellence in Governance



▲ Process for onboarding new Scheme on Prayas



Visualizations

- Provides **overview of scheme progress**, presentation of top performers and laggards at State/ District level
- Provisions **map view** to build in visual aid and comprehend the situation on ground across the country in a better manner
- Displays **time-series view of data** to allow assessment of the progress of various schemes over a period viz. yearly, quarterly, monthly, etc., provides opportunity to analyze growth as per selected time period
- Enables **drill-down of schemes** with a multitude of analytical visualizations including graphs, charts, quadrant analysis, exploratory analysis, and other representative tableaus for representing and quickly analyzing data
- **Single view glance** of schemes and programs being implemented across Ministries and Departments
- Well aided with consistent visuals to enable administrative officers to identify root cause of problems, take decisions and ensure timely measures for ongoing schemes
- **Sector-wise schemes view** to identify schemes across sectors such as Social and Welfare, Finance & Economy, Technology and Governance
- **Department-wise scheme view** to allow users to select the specific Ministry such as Finance and view schemes such as PM Mudra Yojana, PM Suraksha Bima Yojana, Stand Up India, Sukanya Samridhi Yojana etc.

Thematic Dashboards

Ensure that system has the capability to view the performance of schemes at a holistic level and at the same time the focus on specific zones and sectors is not lost. So far, thematic dashboards have been built in the following areas:

- **Insurance** – Presents schemes providing insurance benefits namely Ayushman Bharat PM Jan Arogya Yojana, PM Jeevan Jyoti



▲ Thematic Dashboards

Bima Yojana and PM Suraksha Bima Yojana irrespective of Ministry and Department thus providing holistic view of people being covered through these schemes

- **North Eastern Region** – Provides view of status of scheme implementation in NE States
- **Union Territories** - Focuses on the progress of schemes in Union Territories
- **Aspirational Districts** - Helps users to assess the schemes/ programs performance with a focus on aspirational districts within the State/ UT

Multi-Dimensional Comparative Dashboards

- Provides option to **select multiple dimensions** such as schemes, KPIs and States/ UTs in unison. This helps to understand the correlation among various schemes and their comparative performance. For eg., this could help ascertain impact of opening of **Health and Wellness Centre on PM Jan Aarogya Yojana**, as with primary care growing it is expected that dependency on tertiary care would reduce
- Enables **comparative assessment** of multiple schemes across Districts in the State. This helps to gain insights such as districts

leading for multiple schemes in the State, consistent growth or sudden spike etc. With this information administrators would be able to identify lead districts and assimilate best practices/ innovative solutions and possibly share these learnings with laggard districts

Approach Adopted to Build the Platform

Data Analytics Platform underlying **Prayas** has three components:

In the **first component** the **Data Collection for identified Schemes/ Programs** is performed for outcome/ target oriented Key Performance Indicators (KPIs) electronically using API based technologies along with pre-defined granularity, periodicity, and tenure of data availability from Ministries and Departments through our Prayas Data collection portal. Once data is received the **second component** caters to **Data Processing and Analytics**. Here, data is processed to generate visuals including graphs, time-series data etc. to identify actionable insights.

Finally, the **third component** presents the **Dashboard/ Visualization layer** with comprehensive views across Sectors, Ministries & Departments, Thematic Dashboards etc. created for users.



Prayas is a data driven framework that enables government to visualize progress of its flagship schemes on a single platform and monitor their progress basis Key Performance Indicators (KPIs). Prayas electronically captures aggregated anonymous data from IT systems of Schemes in a predefined format at an agreed frequency and granularity through a secure bridge, thus maintaining a single source of truth.

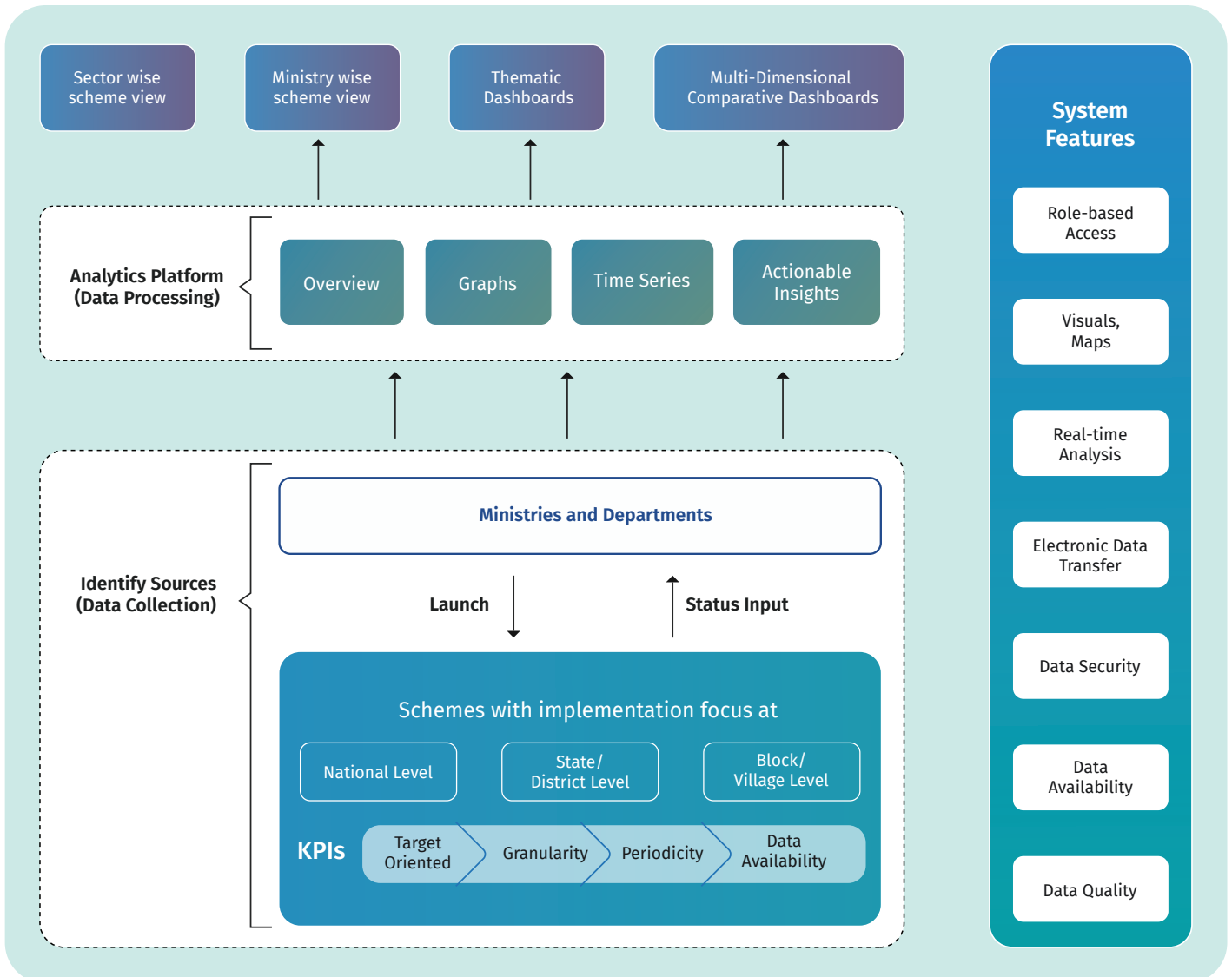
Prayas also helps to assess implementation and reach of different schemes against on a variety of dimensions, such as Sector, Department, State, District, Region as well as on a time scale and get actionable insights.



Dr. NEETA VERMA

Director General
National Informatics Centre





▲ Prayas Dashboard: Components View



▲ Benefiting Stakeholders

Benefits to Stakeholders

- **Prayas** empowers policy makers to analyze performance of schemes for better financial planning and structuring of future schemes
- Undertake inter-relation & comparative study of the schemes across States/ Union Territories and derive insights
- Enables implementation agencies to monitor progress of Schemes/ Programs across the Country till last mile, through comparative view identify better performing Regions/ States/ Union Territories, share success stories and best practices
- Benefit citizens with timely implementation of schemes and access to intended benefits till last mile

Way Forward

Prayas has been built with a vision – to provide an integrated and consistent view of the performance of Government Programs/ Schemes. It helps to monitor the progress of scheme implementation and track that benefits reach till the remotest part of the country. Assimilated learnings and insights

facilitate in planning for future initiatives and programs. More importantly, this platform is pre-configured hence the States can readily use this platform to onboard their state specific flagship programs/ schemes and KPIs in minimal time for reviewing their progress till district/ sub-district level. The platform supports automated detection of exceptions in trends of incoming data such as sudden rise of **200%** in person days generated under MGNREGA in the State or sudden drop of people visiting Health and Wellness Centre. **Prayas** is designed to cater to the data-driven governance and outcomes would get enriched over time.

For further information, please contact:

Anjali Dhingra

HoD, Centre of Excellence for Data Analytics (CEDA)
National Informatics Centre Services Inc. (NICS)
6th Floor (Hall No. 2&3), NBCC Tower, 15 Bhikaji
Cama Place- 110066
NEW DELHI

Email: anjali.d@nic.in, Phone: 11-26105054